

THE METCALF

ST. JAMES'S

FLOORPLANS

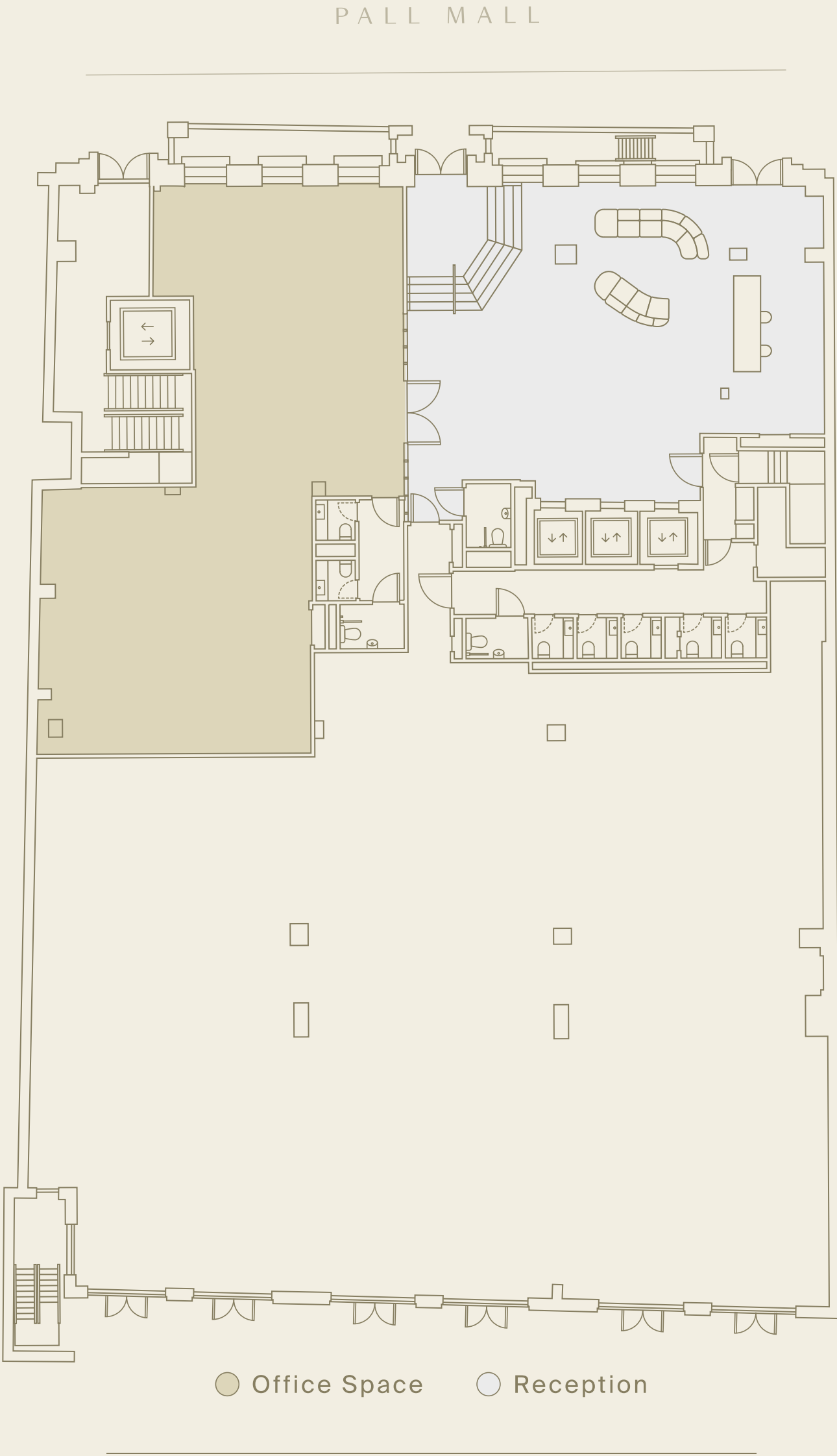
THE
METCALF

ST. JAMES'S

AVAILABILITY

FLOOR	SQ FT
Communal roof terrace & pavilion	1,554
Six	LET
Five	6,391
Four	7,071
Three	LET
Two	7,201
One	7,224
Ground	LET
Ground	1,818
TOTAL	29,705

*Floors Ground - Six measurements are NIA
Pavilion and roof terrace measurements are GIA



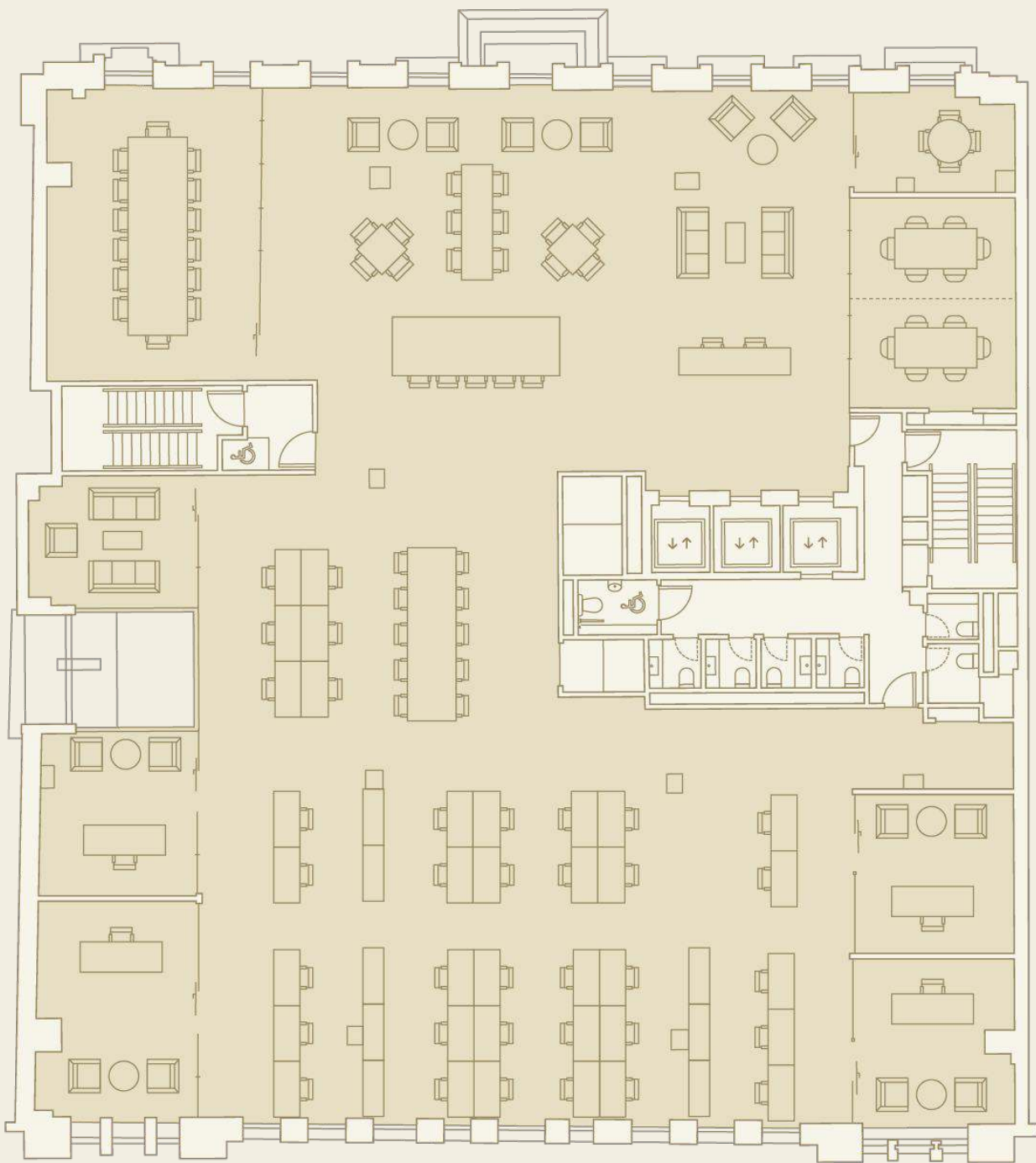
GROUND FLOOR

1,818 sq ft | 169 sq m



THE
METCALF
ST. JAMES'S

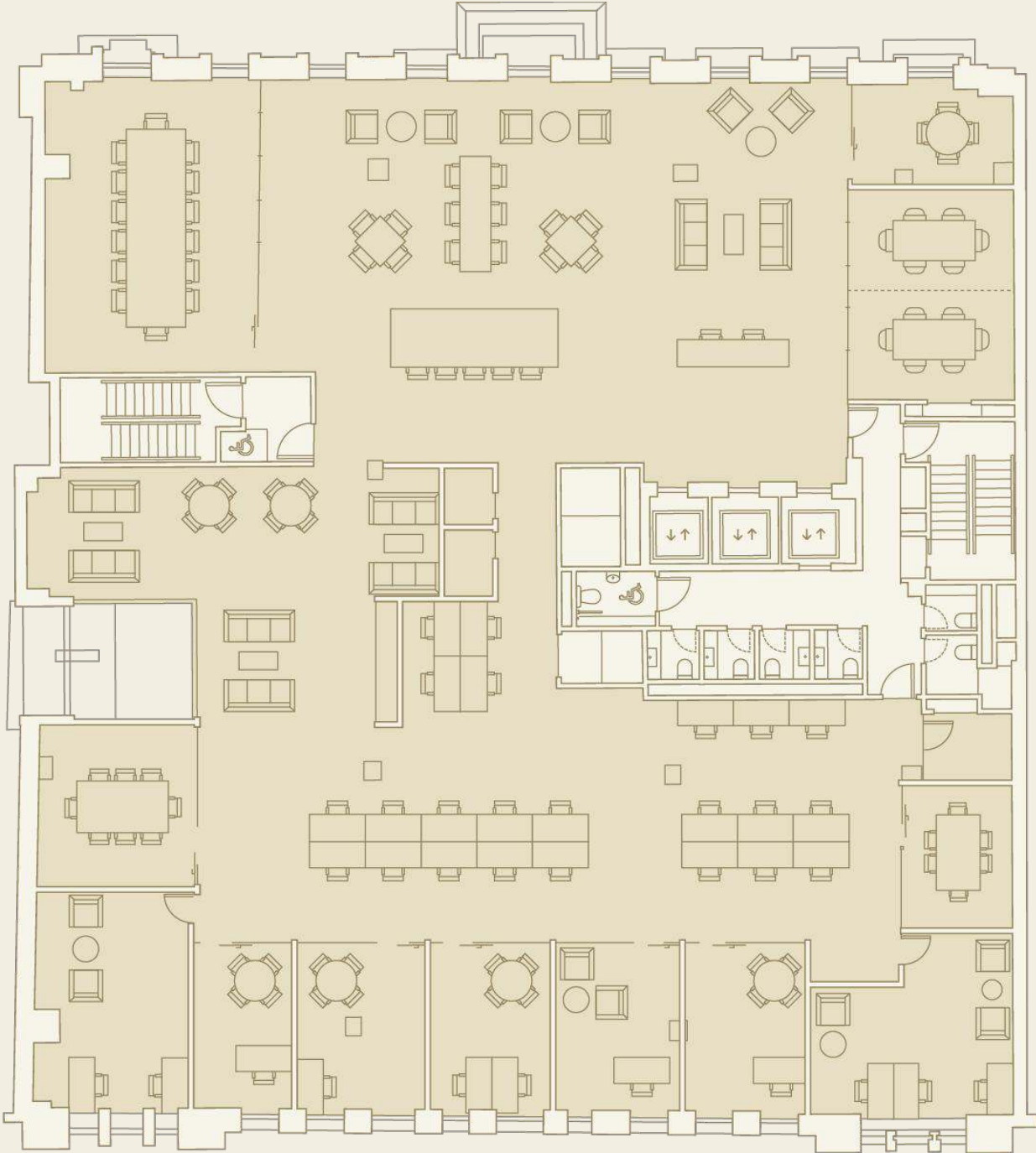
PALL MALL



OPEN PLAN LAYOUT
7,096 sf ft | 659 sq m

Open plan workstations	36
Informal working	29
Private offices	4
Meeting room (4 person)	1
Meeting room (6 person)	36
Meeting room (14 person)	2
Total headcount	40

PALL MALL

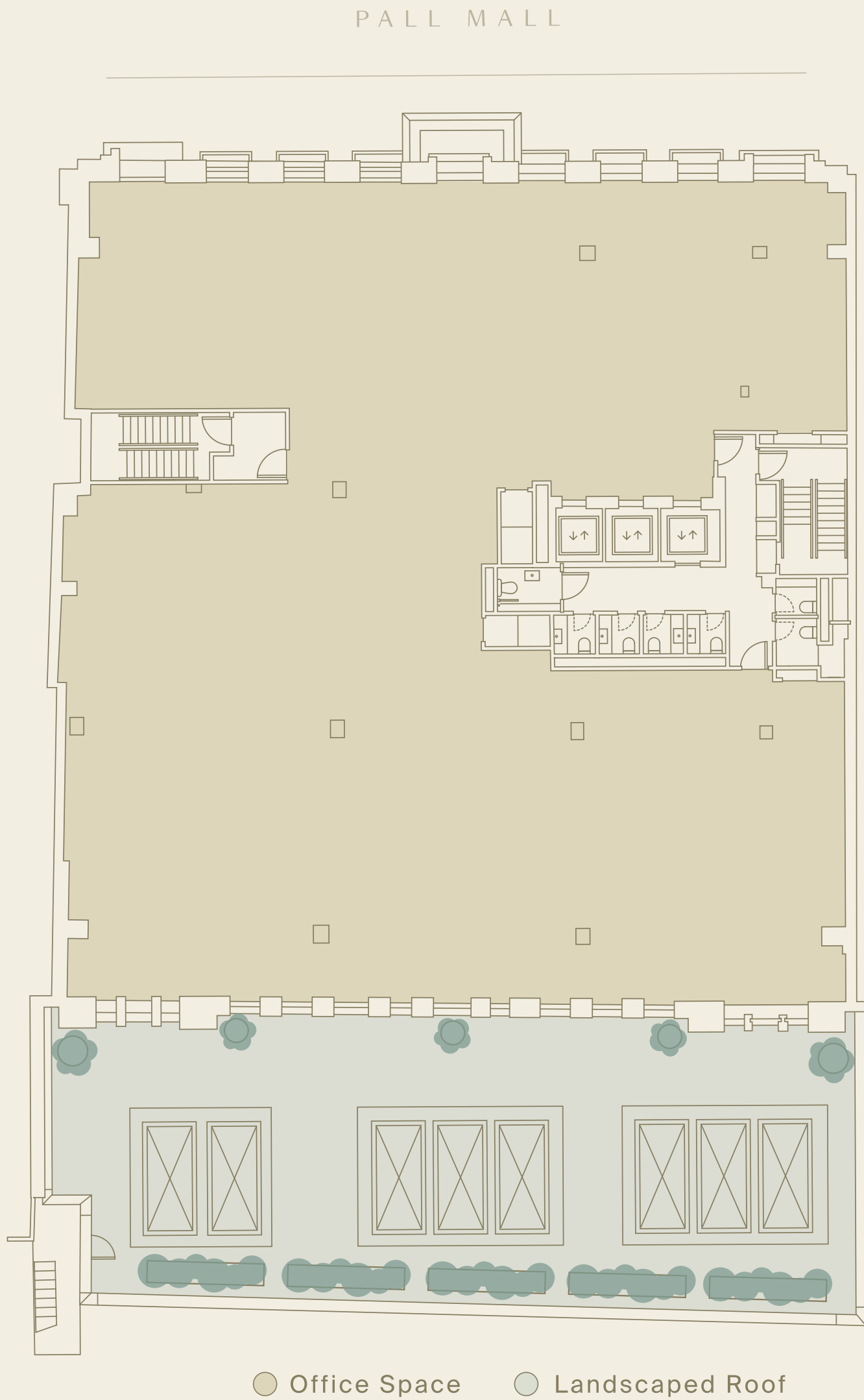


CELLULAR LAYOUT
7,096 sf ft | 659 sq m

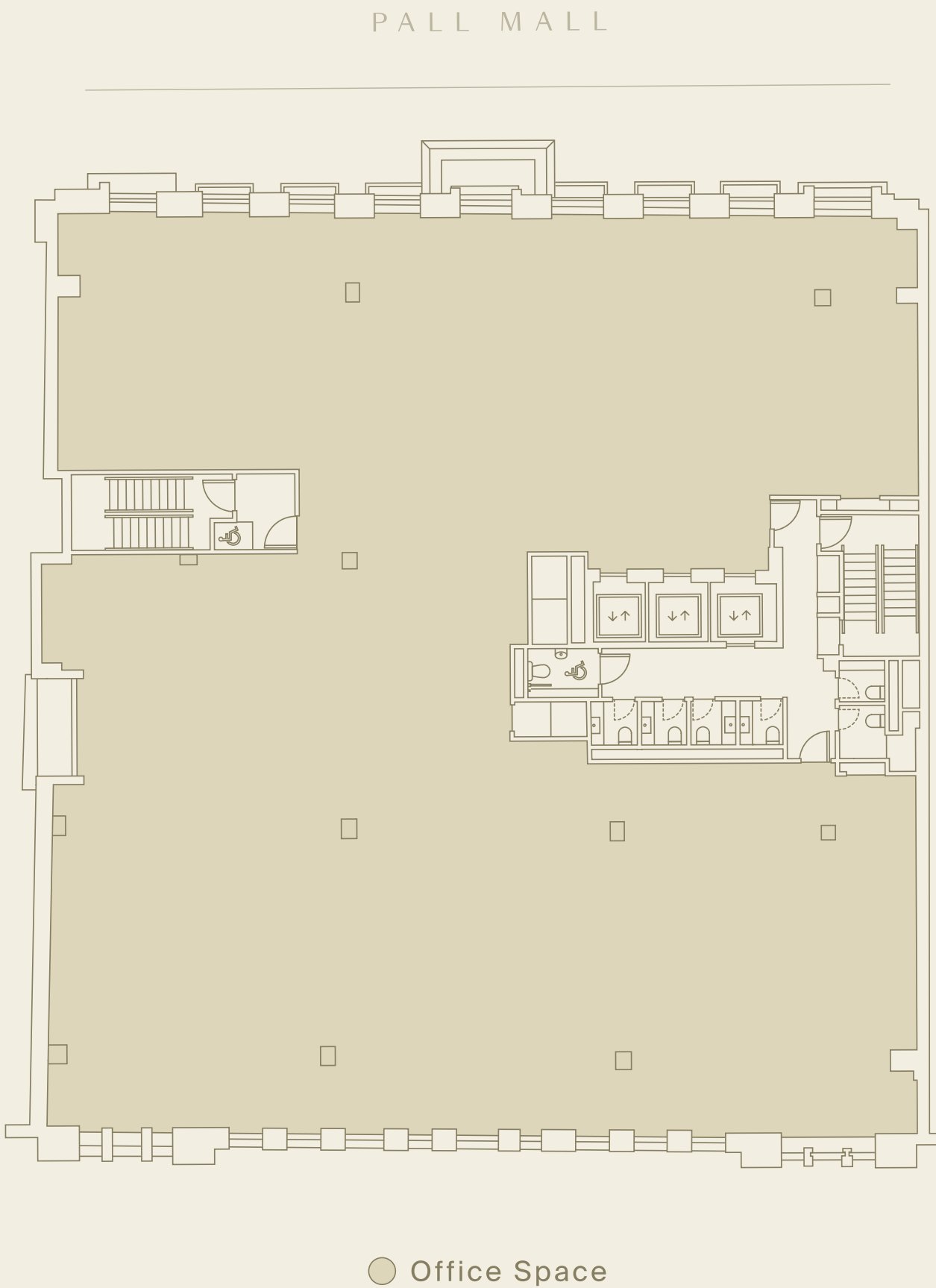
Open plan workstations	23
Informal working	19
Private offices	7
Meeting room (4 person)	1
Meeting room (6 person)	3
Meeting room (8 person)	1
Meeting room (14 person)	1
Total headcount	33



THE
METCALF
ST. JAMES'S



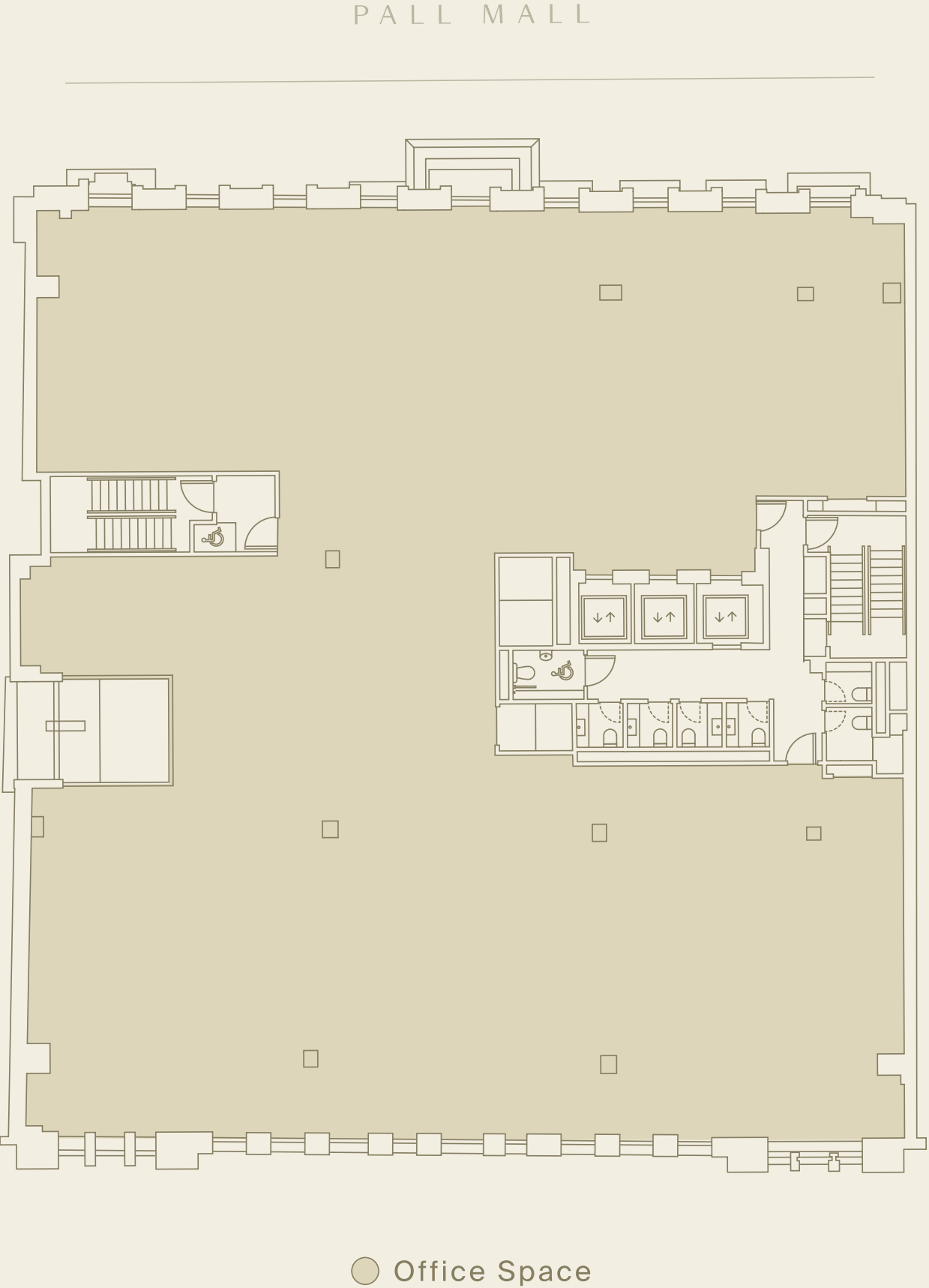
FLOOR ONE
7,224 sf ft | 671 sq m



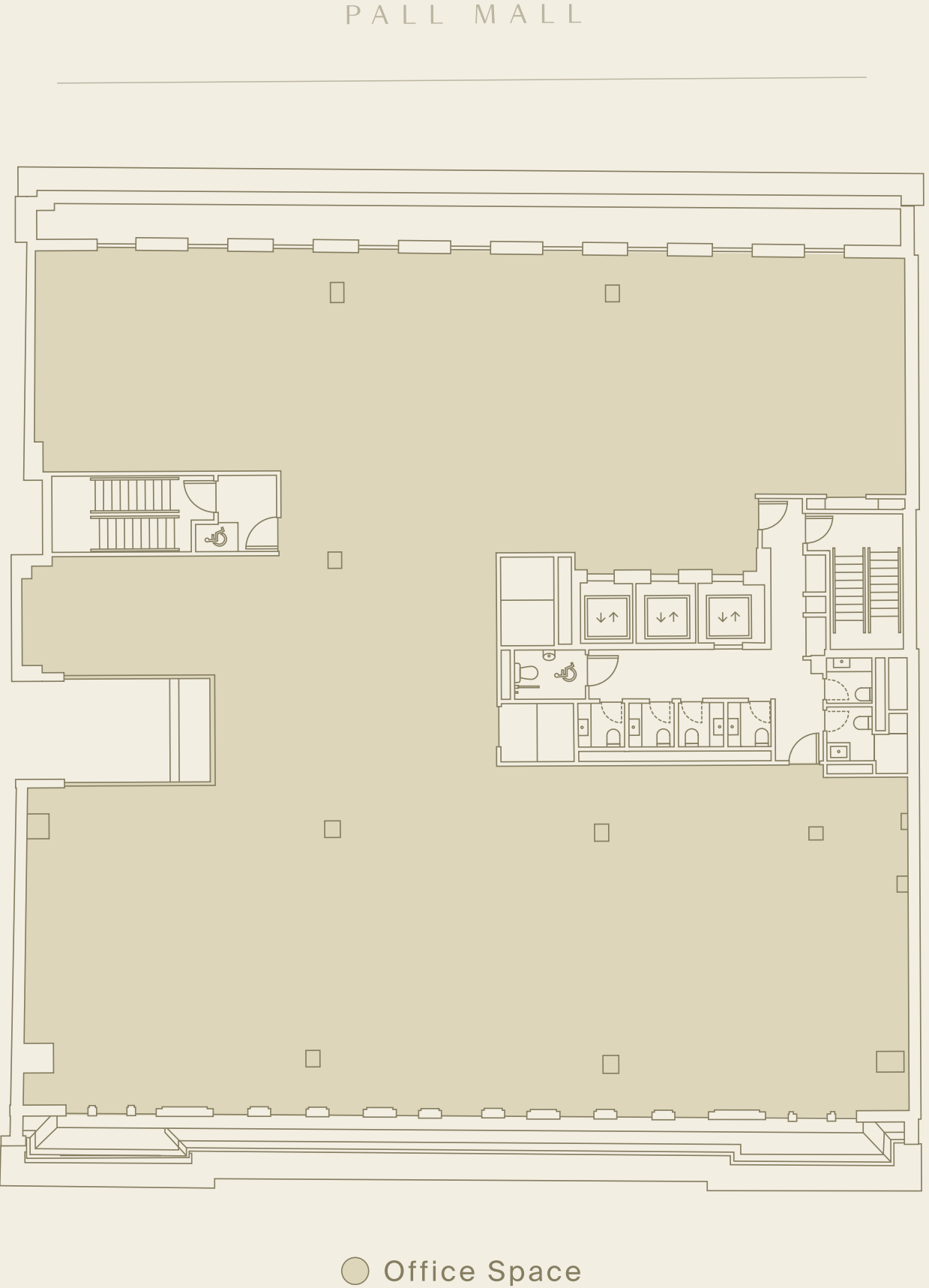
FLOOR TWO
7,201 sf ft | 669 sq m



THE
METCALF
ST. JAMES'S



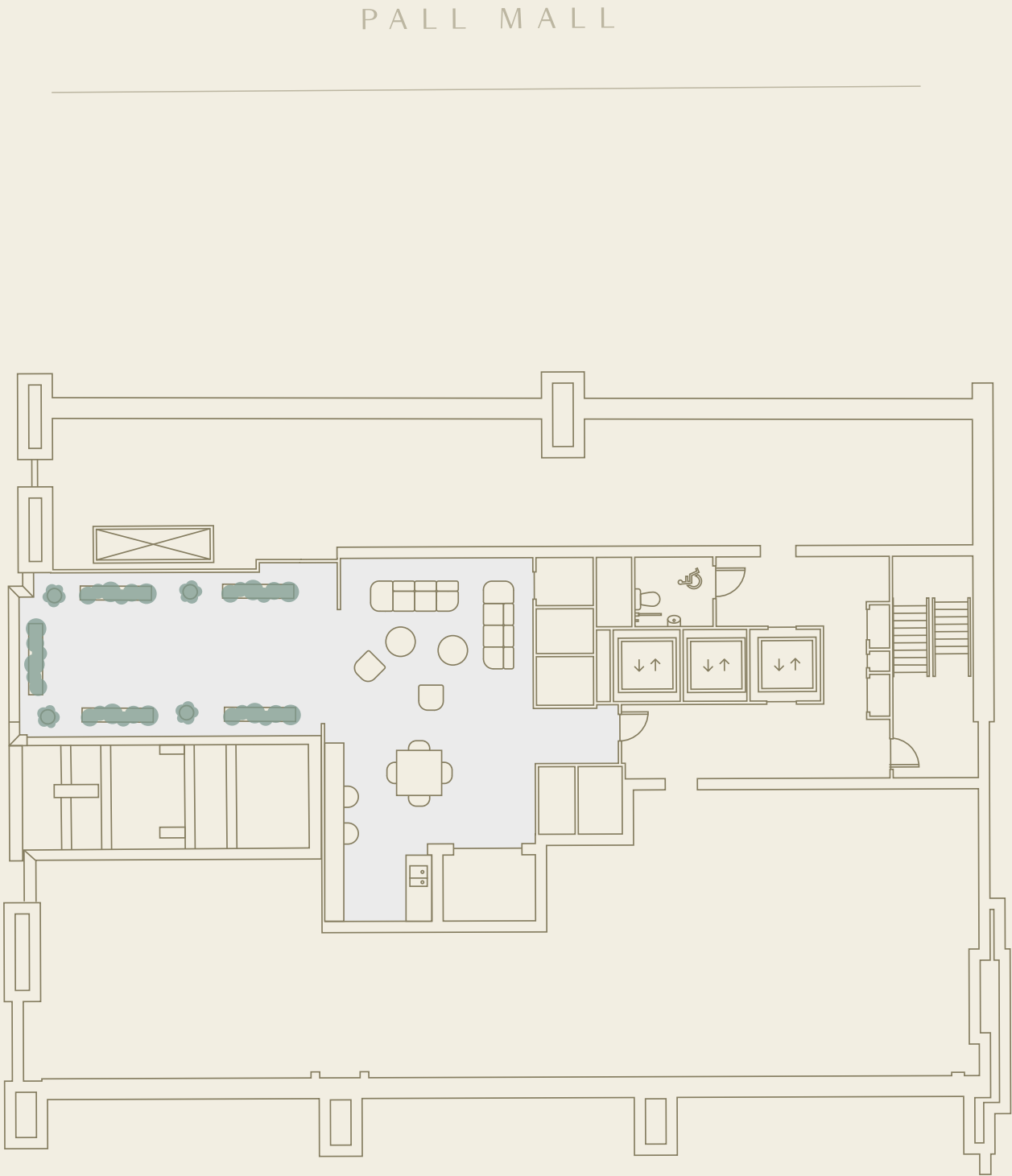
FLOOR FOUR
7,071 sf ft | 657 sq m



FLOOR FIVE
6,391 sf ft | 594 sq m

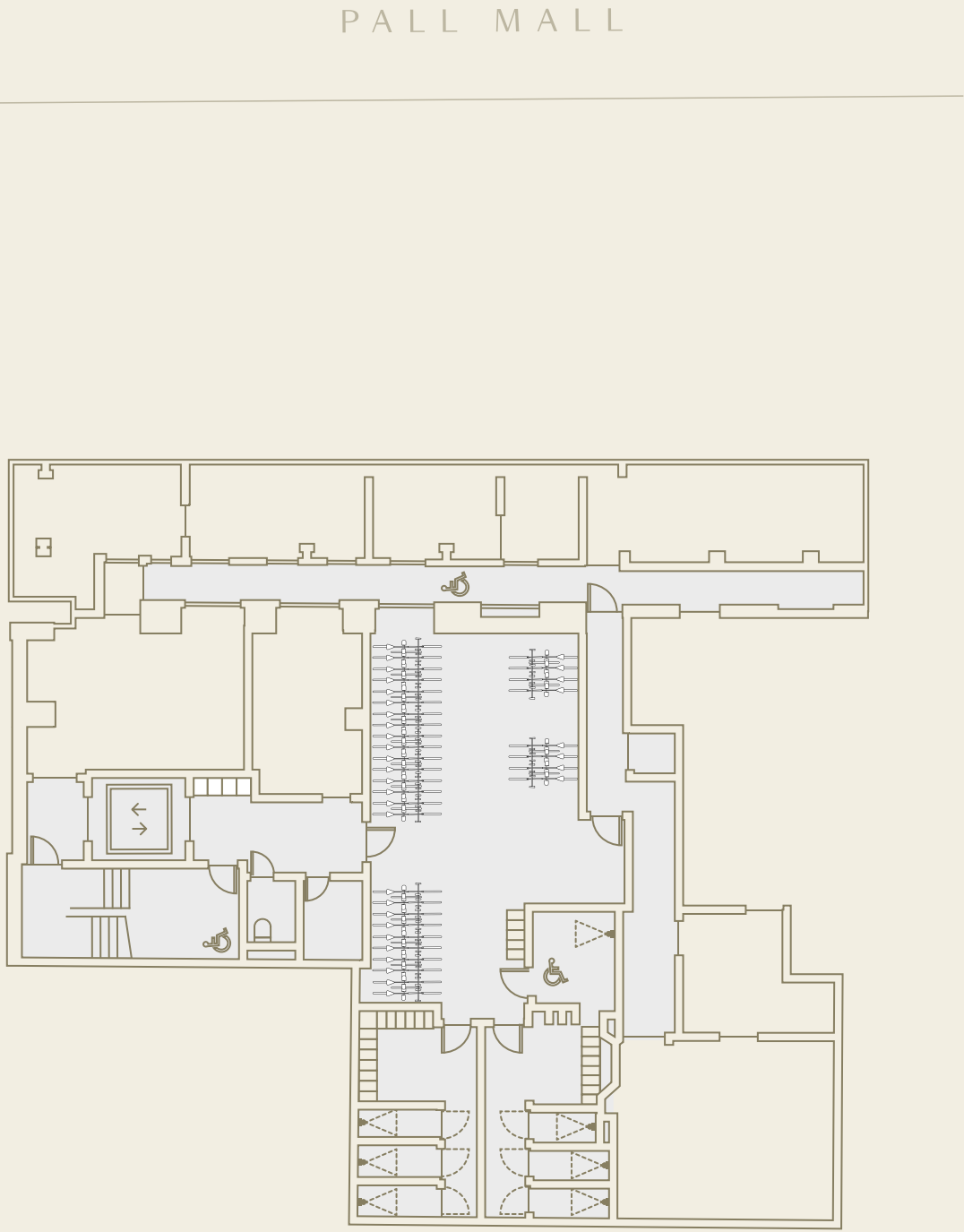


THE
METCALF
ST. JAMES'S



○ Pavilion + terrace

PAVILION & COMMUNAL TERRACE
1,554 sq ft | 144 sq m



56 Cycle spaces



7 Showers



58 Lockers



Drying room



Cycle maintenance area

LOWER GROUND



FOR FURTHER INFORMATION



Angus Tullberg
angus.tullberg@savills.com
07976 256 487

Andrew Wedderspoon
AWedderspoon@savills.com
07807 999 363

Hunter Booth
hunter.booth@savills.com
07710 965 693

NEWMARK

Dan Roberts
Dan.Roberts@nmrk.com
07801 143 909

Callum Stidston-Nott
Callum.Stidston-Nott@nmrk.com
07738 386 038

Misrepresentation Clause: Savills and BH2 on their behalf and for the Vendors or Lessors of this property whose Agents they are, give notice that: 1. These particulars are set out as a general outline only for guidance to intending Purchasers or Lessees, and do not constitute any part of an offer or contract. 2. Details are given without any responsibility and any intending Purchasers, Lessees or Third Parties should not rely on them as statements or representations of fact, but must satisfy themselves by inspection or otherwise as to the correctness of each of them. 3. No person in the employment of Savills or BH2 has any authority to make any representation or warranty whatsoever in relation to this property. 4. Unless otherwise stated, all prices and rents are quoted exclusive of VAT. February 2025.